

BlueLite X1 Midi Note Sample

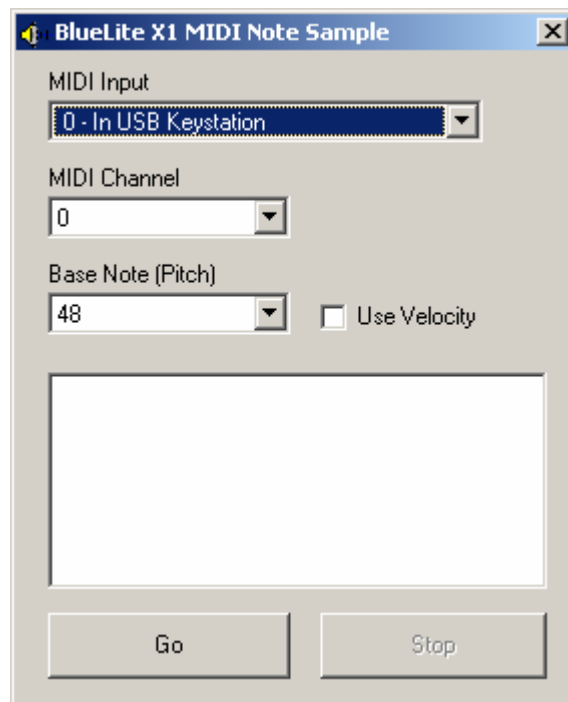
03/20/05

Introduction

This application is a simple MIDI Note to Submaster Level Trigger for the BlueLite X1 Show Control System. It is written in Microsoft's Visual Basic 6.0 and uses the BlueLite X1 Automation API. Documentation for the API along with source code for this application can be downloaded from www.innovateshowcontrols.com/x1automation.

Midi Note Usage

The BlueLite X1 Application (version 1.1 and above) must be running for this application to operate correctly. Once started, the application will look for installed MIDI In ports on your computer. If no MIDI In port is available, the program will issue an error and exit. If at least one MIDI Input is available, the following screen will appear:



The program has four controls:

- MIDI Input Port** - Selects which MIDI Input to monitor
- MIDI Channel** - Selects which MIDI channel (0-15) to monitor on the port
- Base Note** - Which MIDI Note (pitch) to associate with X1 Submaster 1
- Use Velocity** - Select rather notes trigger Submasters full on/off or in scale
MIDI velocity

The “Go” button will start MIDI triggering, the “Stop” button will stop MIDI triggering. Midi activity is logged in the list display at the bottom of the window.

Channel, Base Note, and Use Velocity can all be changed will MIDI triggering is active. MIDI Triggering must be stopped to change Input Ports.

Additional Support

In addition to the documentation and source code available at www.innovateshowcontrols.com/x1automation, support for the BlueLite X1 Automation API is also available via the Innovate Show Controls online forum. This site (<http://www.innovateshowcontrols.com/forum/>) is an excellent way to directly interact with Innovate Show Controls engineers and staff.