

# BlueLite X1 Midi Control Sample

12/08/05

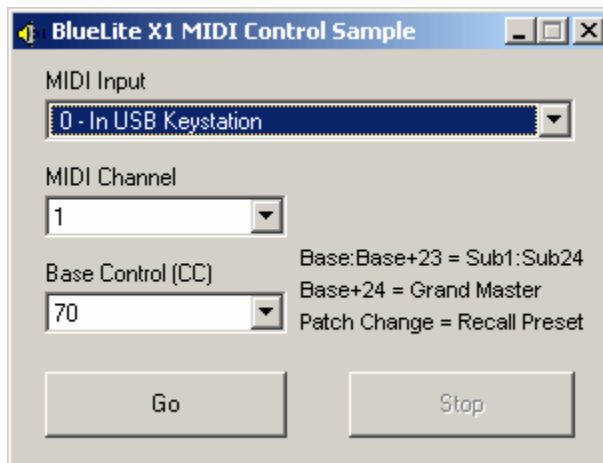
## Introduction

This application is a simple MIDI Controller (CC) to Submaster Level converter for the BlueLite X1 Show Control System. It is written in Microsoft's Visual Basic 6.0 and uses the BlueLite X1 Automation API. Documentation for the API along with source code for this application can be downloaded from [www.innovateshowcontrols.com/x1automation](http://www.innovateshowcontrols.com/x1automation).

The application is primarily intended to allow MIDI controllers to be used instead of a DMX console for tactile input for the X1. However it could also be used to automate the X1 software from a MIDI sequencer.

## Midi Control Usage

The BlueLite X1 Application (version 1.1 and above) must be running for this application to operate correctly. Once started, the application will look for installed MIDI In ports on your computer. If no MIDI In port is available, the program will issue an error and exit. If at least one MIDI Input is available, the following screen will appear:



The program has four controls:

**MIDI Input Port** - Selects which MIDI Input to monitor

**MIDI Channel** - Selects which MIDI channel (1-16) to monitor on the port

**Base Control (CC)** - Which MIDI Control (CC) to associate with X1 Submaster 1

The “Go” button will start MIDI conversion, the “Stop” button will stop MIDI conversion.

Channel and Base Control can be changed will MIDI conversion is active. MIDI Conversion must be stopped to change Input Ports.

The first 24 controller channels (base, base+1, base+2, etc.) control the X1 Submasters. The 25<sup>th</sup> controller channel controls the X1 Grand Master. Patch (program) changes on the selected MIDI channel recall X1 submaster presets (patch 1 recalls preset 1, patch 2 recalls preset 2, etc.)

## **Additional Support**

In addition to the documentation and source code available at [www.innovateshowcontrols.com/x1automation](http://www.innovateshowcontrols.com/x1automation), support for the BlueLite X1 Automation API is also available via the Innovate Show Controls online forum. This site (<http://www.innovateshowcontrols.com/forum/>) is an excellent way to directly interact with Innovate Show Controls engineers and staff.